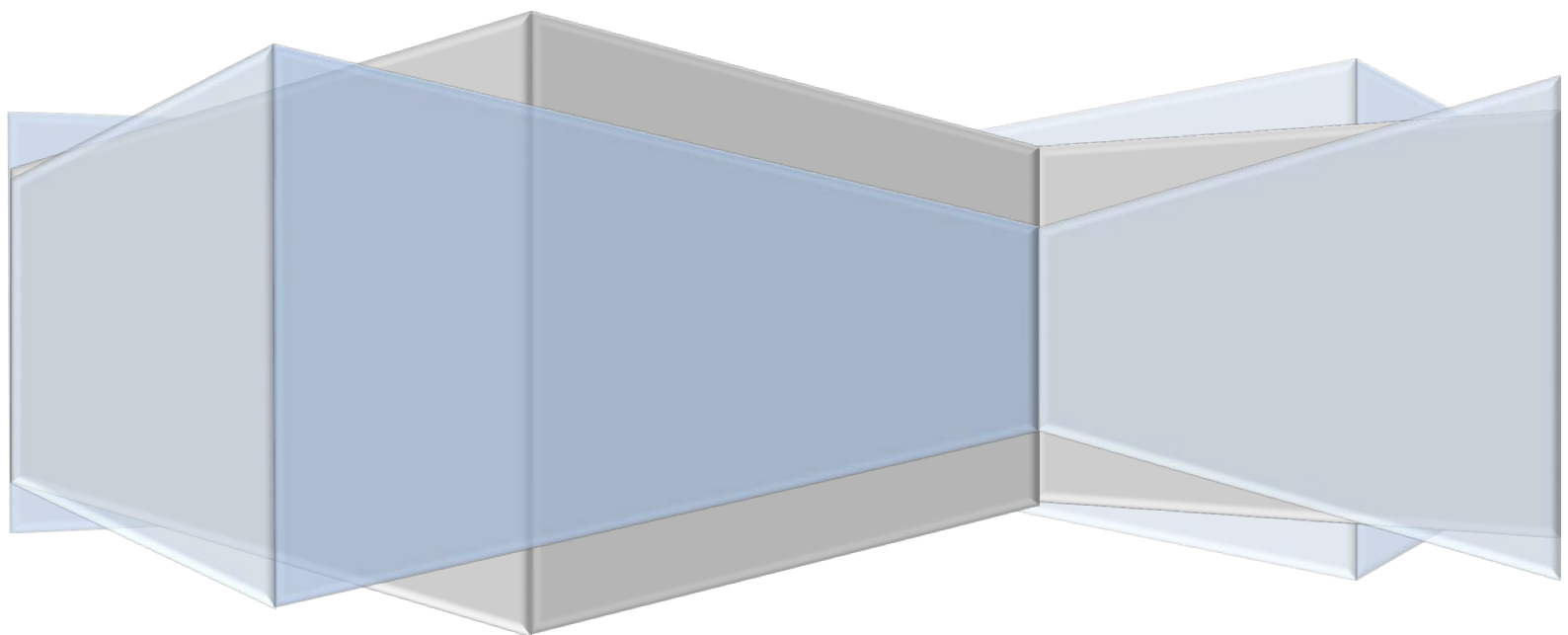




L.E.A.D. Academy Trust

Lead • Empower • Achieve • Drive

How to configure a Windows 7 Device to Open DNS

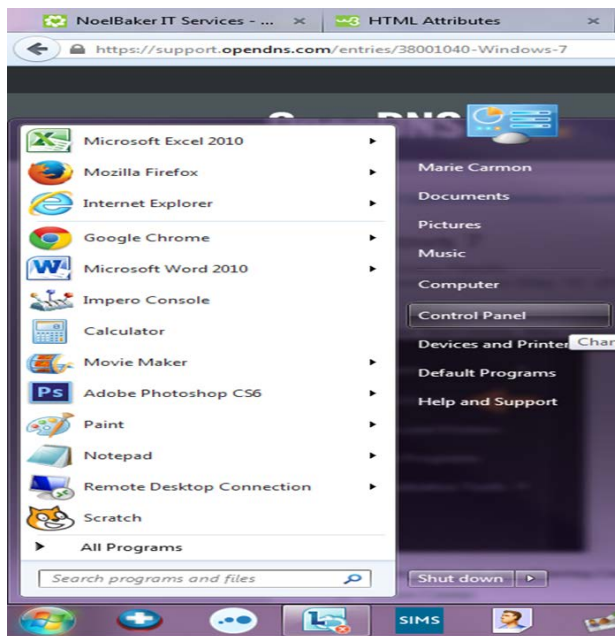


Open DNS

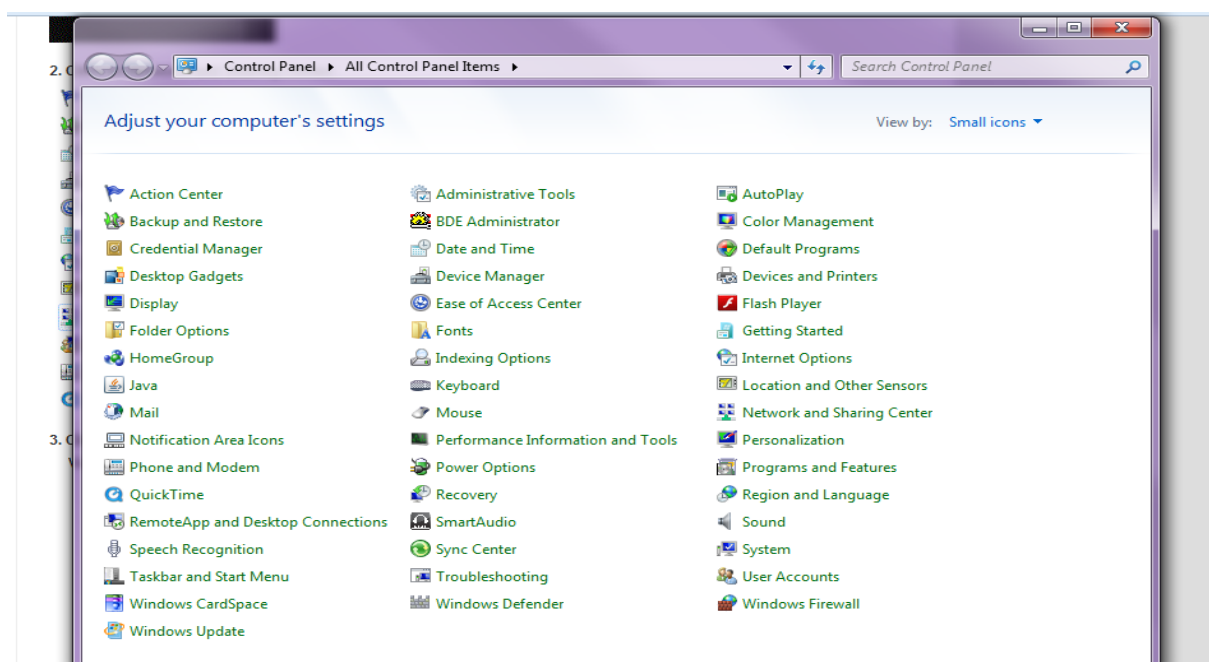
Open DNS provides a cloud-delivered network security services, delivering automated protection against advanced attacks for any device, no matter where it is. Family shield is pre-configured to block adult content, you can set it up and forget about it.

How to Configure

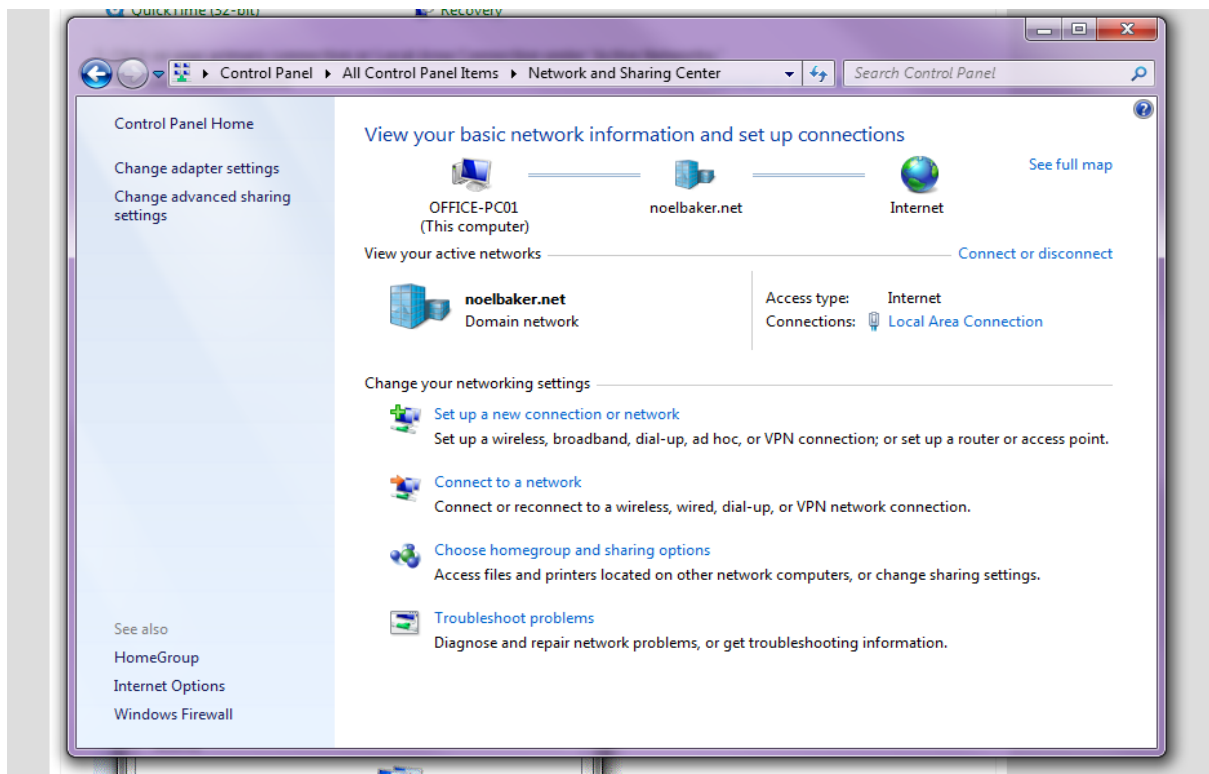
1. Go to start Menu.
2. Select Control Panel.



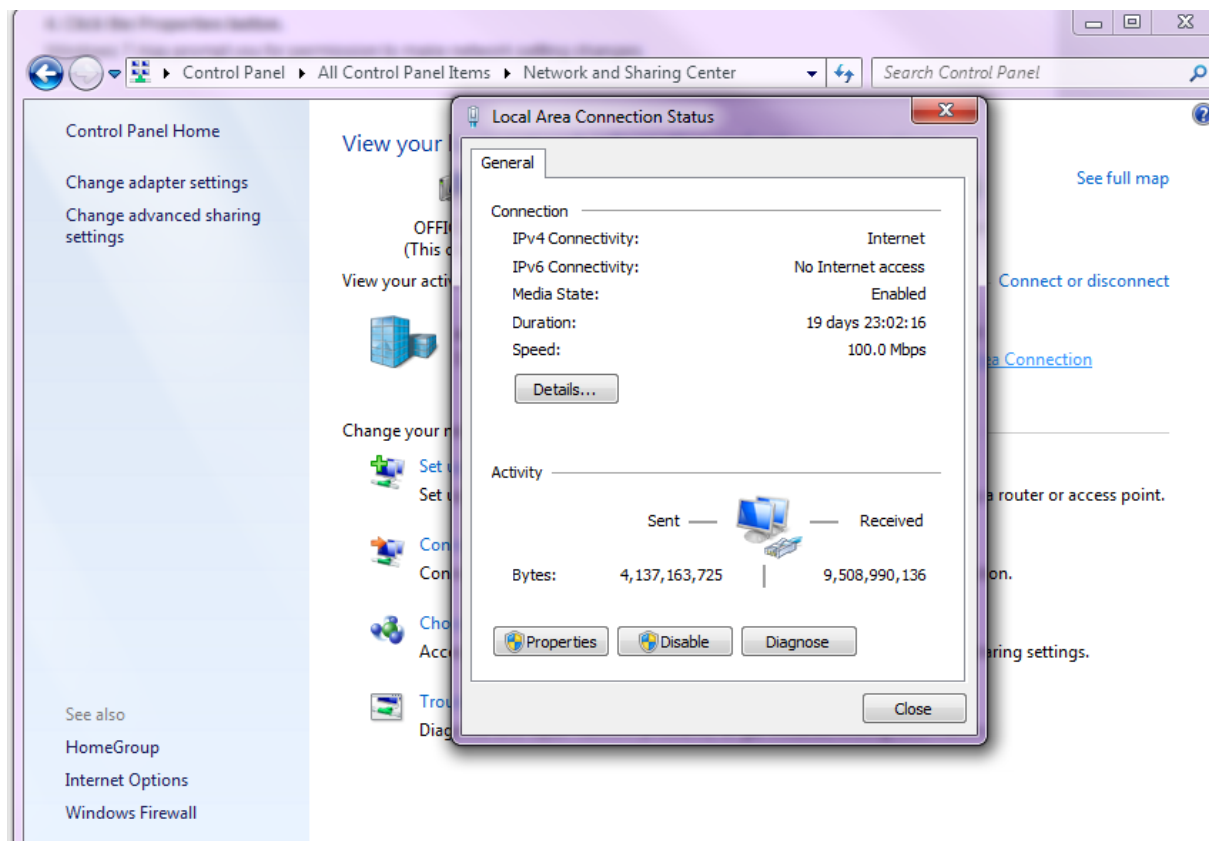
3. Find the **network and Sharing centre**.
4. Select and open this section.



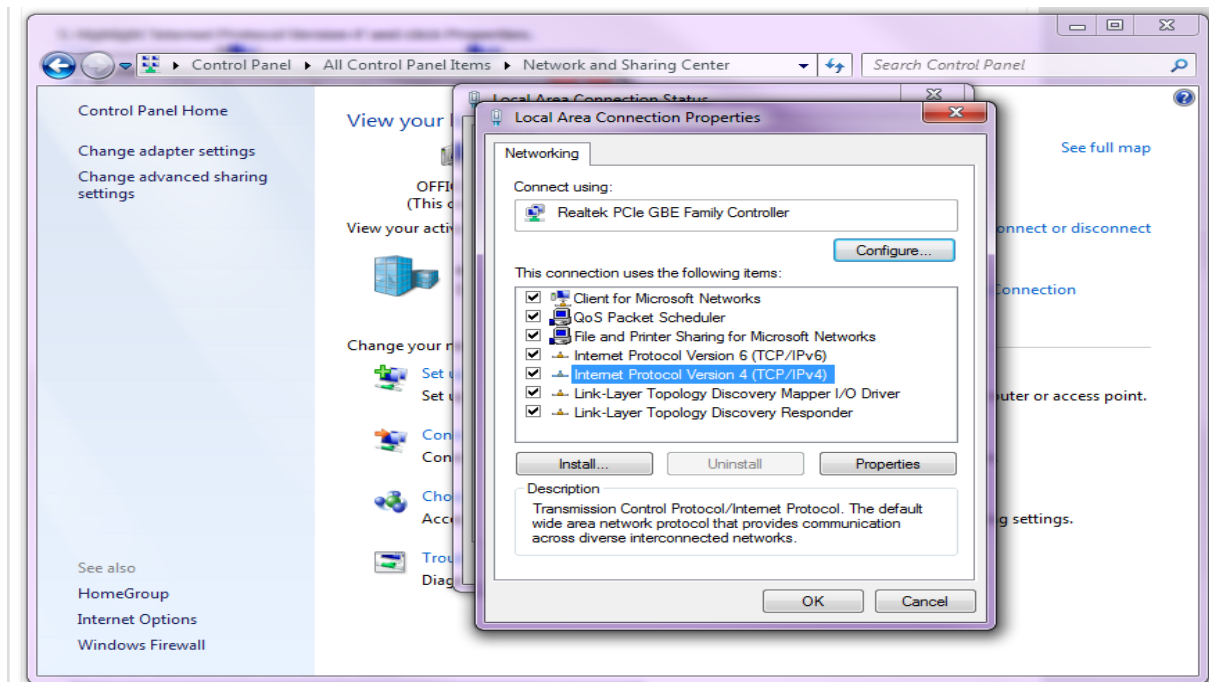
5. Find **Local Area connection** or **Primary connection**, in Active Networks.
6. Click on the link to open another window.



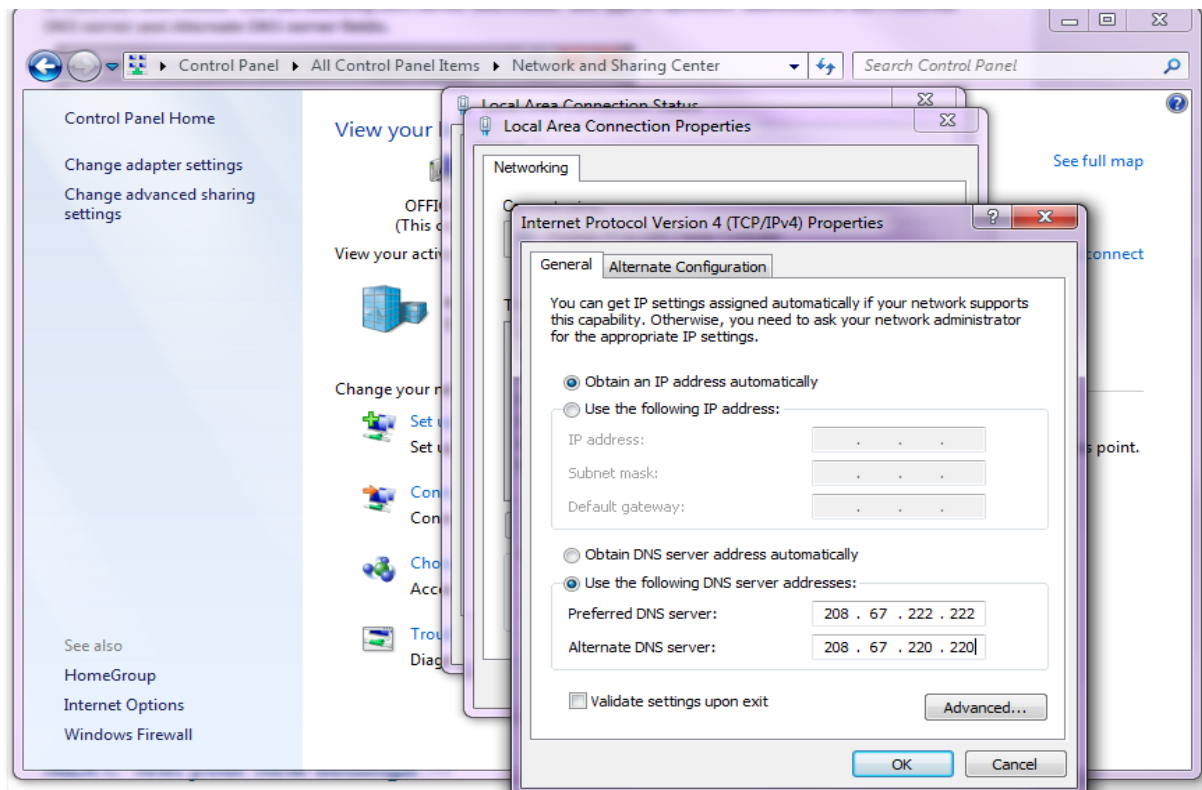
7. Click on **Properties** in new window.
8. May ask for permissions- enter administration details if this shows.



9. Click on **Internal Protocol Version 4 (TCP/IPv4)**.
10. Click on **Properties**.

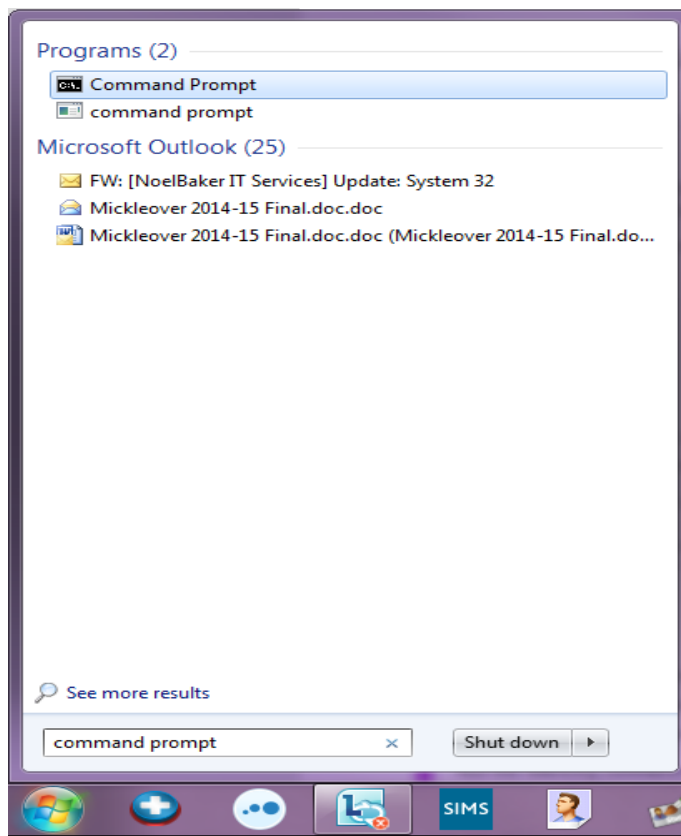


11. Choose **Use the following DNS Server Addresses**.
12. Input Open DNS Server addresses, into gaps.

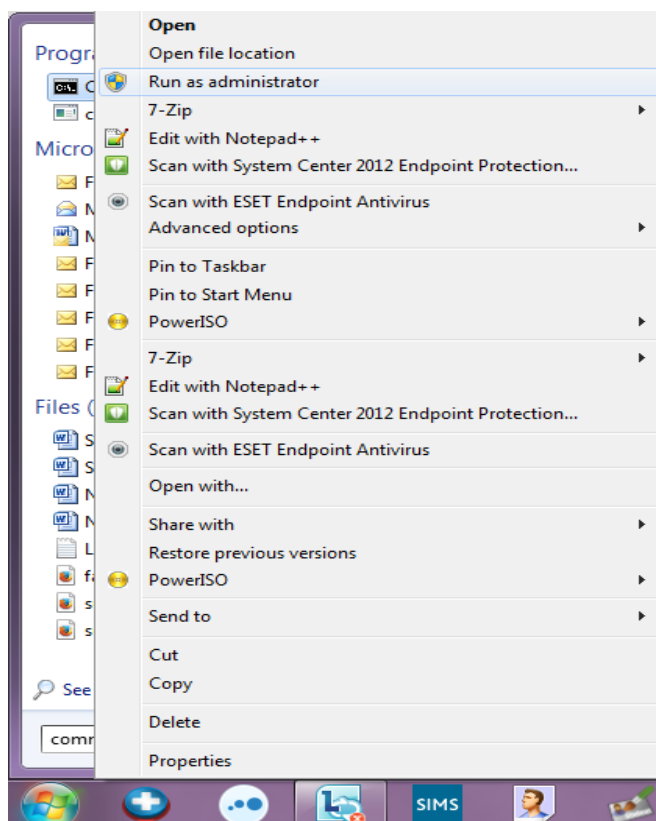


13. Click **Ok** and close each of the windows.
14. Flush DNS and Browser Cache.
15. Go to **start menu**.

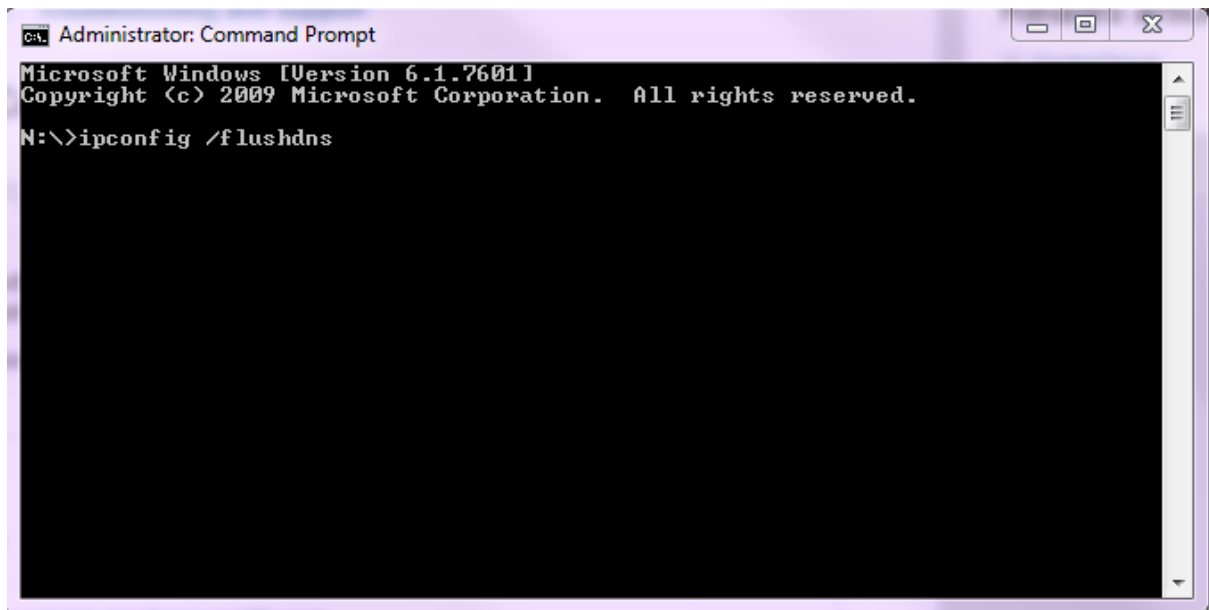
16. Search **command prompt**.



17. Right click and choose **run as administrator**.



18. In new window type: **ipconfig /flushdns**

A screenshot of a Windows Command Prompt window titled "Administrator: Command Prompt". The window has a standard Windows interface with minimize, maximize, and close buttons in the top right corner. The command prompt shows the following text: "Microsoft Windows [Version 6.1.7601] Copyright (c) 2009 Microsoft Corporation. All rights reserved. N:\>ipconfig /flushdns". The command is entered at the prompt, and the rest of the window is black.

```
Administrator: Command Prompt
Microsoft Windows [Version 6.1.7601]
Copyright (c) 2009 Microsoft Corporation. All rights reserved.
N:\>ipconfig /flushdns
```

Additional Information

Open DNS Server addresses:-

Preferred: - 208.67.222.123,

Alternate: - 208.67.220.123